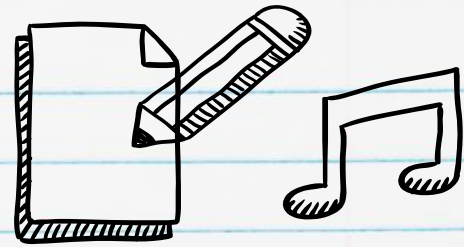


COMPOSE YOUR OWN SONG...AGAIN!



Dear Students,

We're composing again! This time, we're going to write an **8 measure** song using the notes of the D Major Scale!

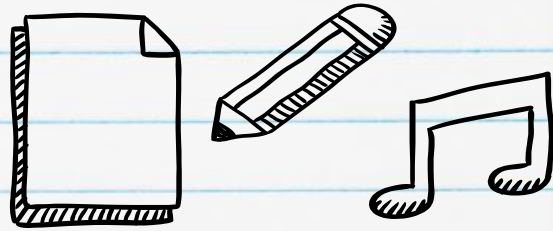


D E F# G A B C# D

When you're done composing, be ready to whip out your violin and play it through!

-Ms. Tristan 😊

DIRECTIONS



1. Make sure you are in "edit" mode. DO NOT put the slide into "present" mode.
2. For each page, click & drag the notes to the part of the measure you want them in.
3. On the last page, write a few words about your song.
4. When you've finished, try playing through your composition on your violin!

Have fun, and let your creativity flow! 😊

MEASURE 1

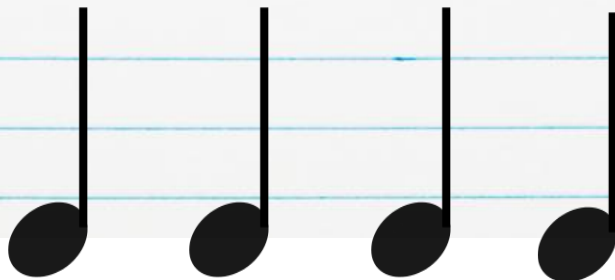


You must be in "edit" mode to complete this.
DO NOT put the slide into "present" mode.

3



In this measure, compose four quarter notes using the any of the pitches
on the D string.



MEASURE 2



You must be in "edit" mode to complete this.
DO NOT put the slide into "present" mode.

4



In this measure, compose a half note and two quarter notes using any of the notes on the A string. Arrange them in any order you want!

A musical staff with a treble clef. Above the staff, three notes are shown: a half note on the second line (F4) and two quarter notes on the second line (F4) and the first space (G4).

MEASURE 3



You must be in "edit" mode to complete this.
DO NOT put the slide into "present" mode.



In this measure, compose two quarter notes and two quarter rests using notes on the A string. Arrange them in any order you want!

A musical staff with a treble clef is shown. Above the staff, four musical symbols are displayed: two quarter notes and two quarter rests. The quarter notes are positioned above the second and third lines of the staff, and the quarter rests are positioned above the fourth and fifth lines. The staff itself is empty, with a double bar line at the end, indicating a measure.

MEASURE 4

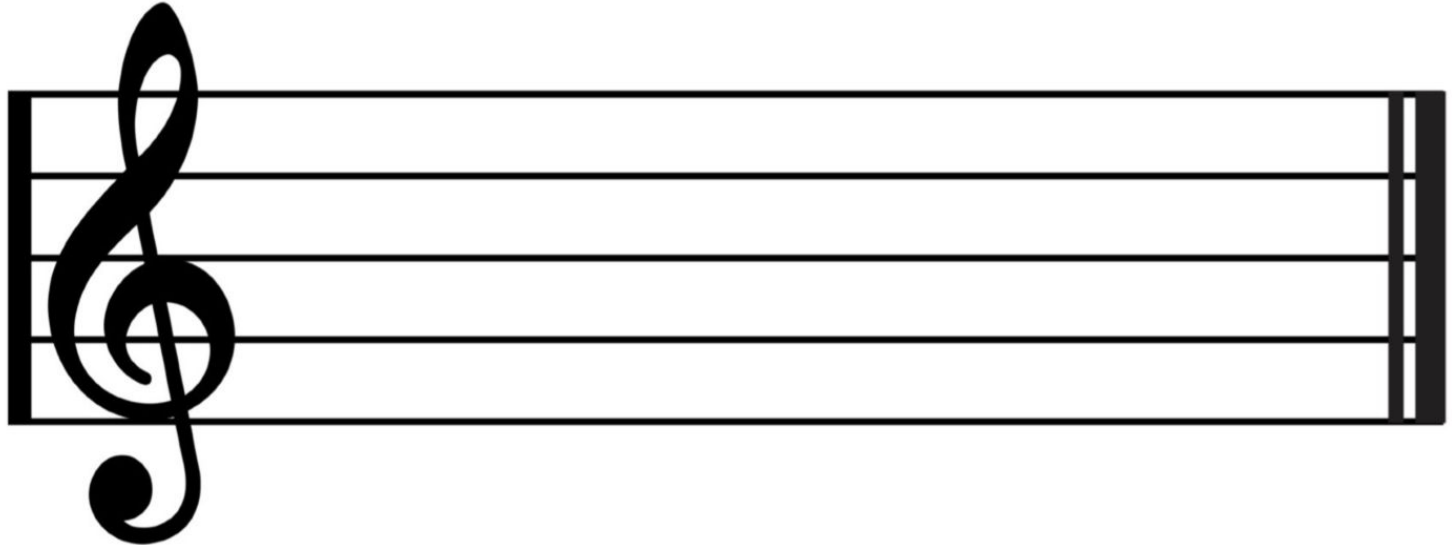


You must be in "edit" mode to complete this.
DO NOT put the slide into "present" mode.

6



This measure will use only one whole note. Choose if you want this whole note to be E (on the D string), A, or C# and place it on the staff.



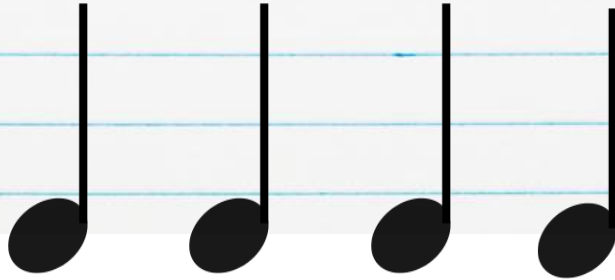
MEASURE 5



You must be in "edit" mode to complete this.
DO NOT put the slide into "present" mode.



In this measure, compose four quarter notes using the any of the pitches on the A string. Don't repeat any notes!



A blank musical staff with a treble clef, intended for the student to write the four quarter notes.

MEASURE 6

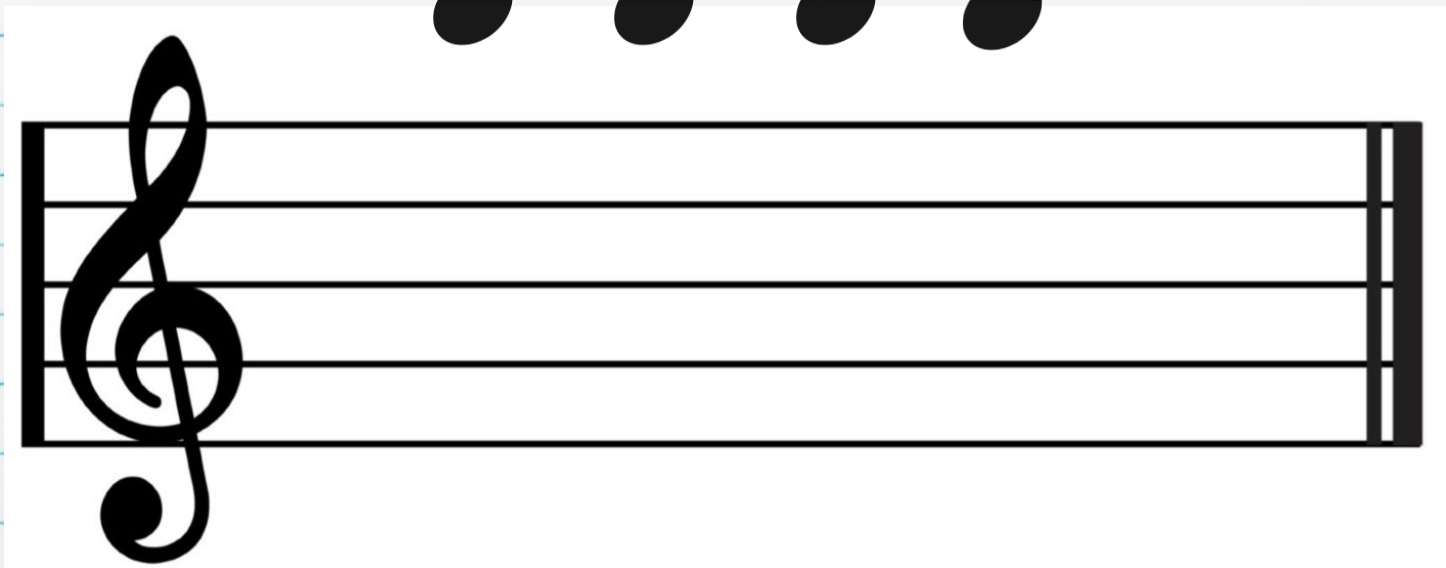
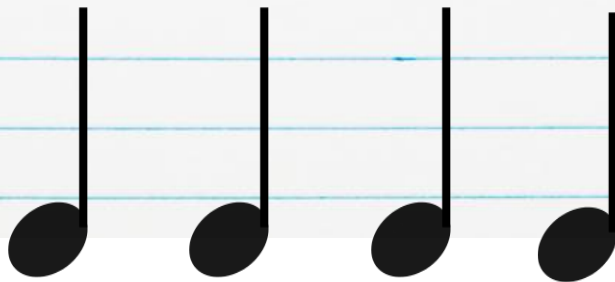


You must be in "edit" mode to complete this.
DO NOT put the slide into "present" mode.

8



In this measure, compose four quarter notes using the any of the pitches on the D string. Don't repeat any notes!



MEASURE 7



You must be in "edit" mode to complete this.
DO NOT put the slide into "present" mode.

9



In this measure, compose two half notes using any of the pitches on the D string. Make the second note a **higher pitch** than the first.

A musical staff with a treble clef. Two half notes are shown floating above the staff, indicating the composition task. The first note is positioned between the second and third lines, and the second note is positioned between the third and fourth lines.

MEASURE 8



You must be in "edit" mode to complete this.
DO NOT put the slide into "present" mode.

10



For the last measure, compose a half note and two quarter notes using any of the notes of the D Major Scale. Arrange them in any order you want!

A musical staff with a treble clef. Above the staff, three notes are shown: a half note on the second line (F4) and two quarter notes on the second space (G4) and second line (F4).

FINAL DRAFT



You must be in "edit" mode to complete this.
DO NOT put the slide into "present" mode.



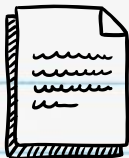
Let's put it all together! Go back through the slides and copy your work!

Play through your song. Is there anything you want to change?

Musical staff with treble clef and 4/4 time signature. The staff is divided into four measures. The first measure contains four quarter notes. The second measure contains a half note followed by two quarter notes. The third measure contains two quarter notes, two eighth notes, and a quarter rest. The fourth measure contains a whole note.

Musical staff with treble clef. The staff is divided into four measures. The first measure contains four quarter notes. The second measure contains four quarter notes. The third measure contains two half notes. The fourth measure contains a quarter note, a quarter note, and a quarter rest.

REFLECTION



Composer (that's you!): [Click to add your name!](#)

Write a few sentences about your song. How does it compare to your last composition? Do you like the way it turned out?

[Click to write your reflection!](#)

Title of your piece: [Click to add your title!](#)
